

2024 Costume List/Info. For Ms. Hannah's Classes

*** LABEL ALL PIECES of costume, accessories, and shoes w/ your child's initials! ***

Costumes, hair, and accessories are as follows:

➤ **Eastside (Tuesday 5:00 Tap)**

- Hair: High Pony Tail
- Costume: "Baby" (Purple Pants, Black Sequin Top)
- Accessories: Tights, Tap Shoes, Purple Sequin Scrunchie

➤ **Potential Break-Up Song (Tuesday 6:00 Tap)**

- Hair: Half up, Half down Ponytail
- Costume: "Fine by Me" (Blue/Green/Black Dress)
- Accessories: Tights, Tap Shoes, Rhinestone Hair piece around pony tail

➤ **Million Dollar Baby (Tuesday 7:00 Jazz)**

- Hair: High Ponytail
- Costume: "Crazy in Love" (White dress)
- Accessories: Tights, Jazz Shoes, Nude Leotard, Earrings, Bracelet, White Shorts (If wanted, not required)

➤ **You're the One that I Want (Thursday 5:00 Jazz)**

- Hair: High Ponytail. Want to see the letters on back of jacket with hair up
- Costume: "I Got Chills" (Black Leather Jumper w/ Pink Ladies Jacket)
- Accessories: Tights, Jazz Shoes, "Pink Ladies" Jacket, Black Neck Scarf, Sequin Hair piece

➤ **Mother (Thursday 6:00 Jazz)**

- Hair: High Ponytail with feather hair piece on left side
- Costume: "I Want to be a Rockette" (Pink or Blue Feather Flapper Girl Dress)
- Accessories: Tights, Jazz shoes, Feather Hair Piece on Left side

** Underwear should not be worn, only tights and leotards. If bras are worn, straps must be clear or hidden.

** ALL hair should be hairsprayed and bobby pinned back out of the face without strands and wisps flying everywhere when they dance! Hair ties should be the same color as the hair (or clear). Hair accessories (ribbons, headbands, etc.) should be secured in hair with bobby pins/clips so it does not fall out.

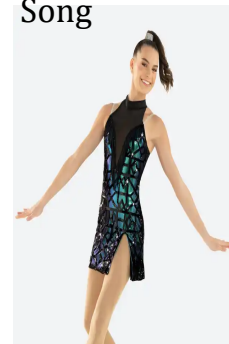
** MAKEUP IS REQUIRED FOR ALL DANCERS!! This includes but is not limited to foundation, eye shadow (blues/greys), mascara, rosy pink blush, and dark red lipstick.

** NO nail polish

Eastside



Potential Break-Up Song



Million Dollar Baby



You're the One that I want



Mother